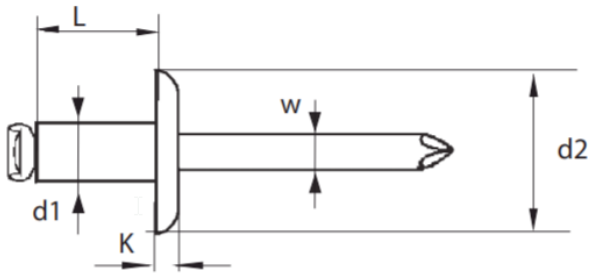


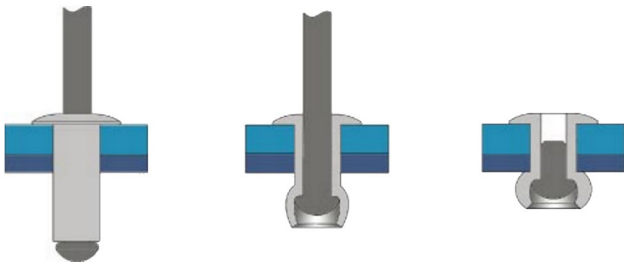
DATA SHEET

FOR RIVETS FOR BIG HEAD BLIND RIVETS MADE OF ALUMINUM/STEEL

Rivet: Aluminium AlMg 3.5
Mandrel: steel zincplated
EN ISO 14589



d_1 = diameter of rivet
 L = length of rivet
 d_2 = diameter of head
 K = height of head
 w = diameter of mandrel
 E = grip length



d1	L	d2	K	w	E	Art.-Nr.
4.8	14.0	16.0	1.8	2.65	8.0 - 10.0	55934814
	16.0				10.0 - 12.0	55934816
	18.0				12.0 - 14.0	55934818
	24.0				7.0 - 20.0	55934824

specifications in mm

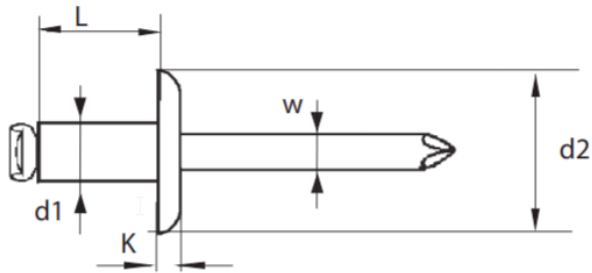
Load capacity of the assembly for sheering strain/ tensile strain:

4.8: 1.850N / 2.600N

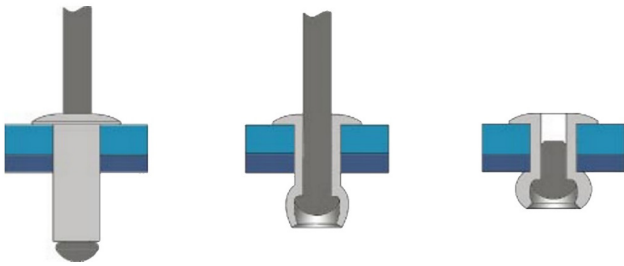
DATENBLATT

FÜR NIETEN FÜR GROSSKOPF BLINDNIETEN AUS ALUMINIUM/STAHL

Niete: Aluminium Al Mg 3,5
Nietdorn: Stahl, verzinkt A1K
EN ISO 14589



d1 = Durchmesser der Niete
L = Länge der Niete
d2 = Durchmesser des Nietkopfs
K = Höhe des Nietkopfs
W = Durchmesser des Dorns
E = möglicher Klemmbereich



d1	L	d2	K	w	E	Art.-Nr.
4.8	14.0	16.0	1.8	2.65	8.0 - 10.0	55934814
	16.0				10.0 - 12.0	55934816
	18.0				12.0 - 14.0	55934818
	24.0				7.0 - 20.0	55934824

Angaben in mm

Belastbarkeit der Nietverbindung auf Scherung / Zug:

4.8: 1.850N / 2.600N