



W-DMX T2

W-DMX TRANSCEIVER
CLWDMXT2

CONTENTS / INHALTSVERZEICHNIS / CONTENU / CONTENIDO / TREŚĆ / CONTENUTO

ENGLISH

APPROPRIATE USE	3
SAFETY INSTRUCTIONS	3
DEFINITIONS AND SYMBOL EXPLANATIONS	3
SAFETY INSTRUCTIONS	4
W-DMX-G6 USER MANUAL	7
CARE, MAINTENANCE AND REPAIR	25
DISPOSAL	26
MANUFACTURER'S DECLARATIONS	26

YOU HAVE MADE THE RIGHT CHOICE!

This device has been developed and manufactured to the highest quality standards to ensure many years of problem-free operation. Please read this manual carefully to be able to use your new Cameo product quickly and optimally. Further information about Cameo Light is available on our website **CAMEOLIGHT.com**.

APPROPRIATE USE

This product is a device for event technology!

The product has been developed for professional use in the field of event technology and is not suitable for use as domestic lighting.

Furthermore, this product is only intended for qualified users with specialist knowledge of event technology!

Use of the product outside the specified technical data and operating conditions is considered inappropriate!

Liability for damage and third-party damage to persons and property due to inappropriate use is excluded!

The product is not suitable for:

- persons (including children) with limited physical, sensory or mental abilities or lack of experience and knowledge.
- children (children must be instructed not to play with the device).

SAFETY INSTRUCTIONS

- To avoid possible damage, please read and follow these instructions carefully.
- Keep all information and instructions in a safe place.
- Observe all warnings. Do not remove any safety instructions or other information from the unit.

DEFINITIONS AND SYMBOL EXPLANATIONS

1. **HAZARD:** The word HAZARD, possibly in combination with a symbol, indicates situations in which there is an immediate danger or risk of potentially fatal injury.
2. **WARNING:** The word HAZARD, possibly in combination with a symbol, indicates situations in which there is an immediate danger or risk of potentially fatal injury.
3. **CAUTION:** The word CAUTION, possibly in combination with a symbol, indicates situations or conditions that could result in injury.
4. **ATTENTION:** The word ATTENTION, possibly in combination with a symbol, indicates situations or conditions that could result in damage to property and/or the environment.



This symbol identifies hazards that can cause electric shock.



This symbol identifies danger points or hazardous situations.



This symbol indicates hazards caused by hot surfaces.



This symbol indicates hazards caused by intense light sources.



This symbol indicates additional information relating to use of the product.

SAFETY INSTRUCTIONS



HAZARD:

1. Do not open the device and do not perform any modifications.
2. If your device no longer functions properly, if liquids or objects get inside it or if it has been damaged in any other way, switch it off immediately and disconnect it from the mains. The device may be repaired only by authorised repair technicians.
3. For devices of protection class 1, the protective conductor must be connected correctly. Never disconnect the protective conductor. Devices of protection class 2 do not have a protective conductor.
4. Ensure that live cables are not kinked or otherwise mechanically damaged.
5. Never bypass the device fuse.

ENGLISH



WARNING:

1. The device must not be put into operation if it shows obvious signs of damage.
2. The device may only be installed in a voltage-free state.
3. If the power cord of the device is damaged, the device must not be used.
4. Permanently connected mains cables may only be replaced by a qualified person.



CAUTION:

1. Do not put the device into operation immediately if it has been exposed to extreme temperature fluctuations (for example, after transportation). Moisture and condensation can damage the device. Do not switch on the device until it has reached room temperature.
2. Ensure that the voltage and frequency of the mains supply match the values specified on the device. If the device has a voltage selector switch, do not connect the device until it has been set correctly. Use only suitable power cables.
3. To disconnect the device from the mains on all poles, it is not sufficient to press the on/off switch on the device.
4. Make sure that the fuse used corresponds to the type printed on the device.
5. Ensure that suitable measures have been taken against overvoltage (e.g. lightning strikes).
6. Observe the specified maximum output current on devices with a Power Out connection. Ensure that the total current consumption of all connected devices does not exceed the specified value.
7. Replace pluggable mains cables with original cables only.



HAZARD

1. Choking hazard! Plastic bags and small parts must be kept out of reach of persons (including children) with reduced physical, sensory or mental capabilities.
2. Risk of falling! Make sure that the device is securely installed and will not fall down. Only use suitable stands or mountings (particularly for fixed installations). Make sure that accessories are correctly installed and secured. Ensure that applicable safety regulations are observed.



WARNING:

1. Use the device in the prescribed manner only.
2. Operate the device using only accessories of the type recommended and supplied by the manufacturer.
3. Observe safety regulations applicable in your country during installation.
4. After connecting the device, ensure that all cables are routed so as to avoid damage or accidents, such as from tripping.
5. Always observe the specified minimum distance to normally flammable materials! Unless explicitly stated, the minimum distance is 0.3 m.

**CAUTION:**

1. Moving components such as mounting brackets may become jammed.
2. In the case of devices with motor-driven components, there is a risk of injury due to the movement of the device. Sudden movement of the device can cause shock reactions.
3. The housing surface of the device can become very hot during regular operation. Ensure that accidental touching of the housing is not possible. Always allow the device to cool down sufficiently before removal, maintenance work and charging etc.

**CAUTION:**

1. Do not install or use the device in the vicinity of radiators, accumulators, stoves, or other heat sources. Ensure that the device is always installed in such a way that it is sufficiently cooled and cannot overheat.
2. Do not place ignition sources, such as burning candles, near the device.
3. Ventilation openings must not be covered and fans must not be blocked.
4. Use the original packaging or packaging provided by the manufacturer for transport.
5. Avoid shocks or impacts to the device.
6. Observe the IP rating and the ambient conditions such as temperature and humidity according to the specifications.
7. Devices can be further developed on an ongoing basis. In the event of deviating information on operating conditions, performance or other device properties between the user manual and the device labelling, the information on the device always has priority.
8. The device is not suitable for tropical climate zones and for operation at over 2000 m above sea level.
9. Unless explicitly stated, the device is not suitable for operation under marine conditions.

NOTES FOR PORTABLE INDOOR EQUIPMENT

1. temporary operation! Event equipment is basically designed for temporary operation only.
2. continuous operation or permanent installation can lead to impairment of the function and premature ageing of the equipment.

**SIGNAL TRANSMISSION BY RADIO (e.g. W-DMX or audio radio systems):**

The quality and performance of wireless signal transmissions generally depends on the ambient conditions.

The following factors can impact range and signal stability, for example:

Shielding (e.g. masonry, metal structures, water)

High volume of radio traffic (e.g. powerful wireless LAN networks)

Interference

Electromagnetic radiation (e.g. LED video screens, dimmers)

All range specifications refer to free-field application with visual contact and without interference!

The operation of transmission systems is subject to official regulations. These may vary from region to region and must be checked by the operator before use (e.g. radio frequency and transmission power).



WARNING: Devices with wireless signal transmission are not suitable for use in sensitive areas in which radio operation can lead to potential detrimental effects. These include:

- hospitals, health centres or other healthcare facilities that provide patient treatment with skilled personnel and equipment.
- Hazardous areas Class I, II and III
- Restricted areas
- Military facilities
- Aircraft or vehicles
- Areas where the use of mobile phones is prohibited



TRANSMISSION VIA W-DMX

WARNING: In general, wireless DMX transmission must not be used for applications involving safety-related factors that might result in personal injury or property damage in the event of a failure.

This applies in particular to moving scene or traverse structures, DMX-controlled motors/lifts or lifting devices for operating DMX-operated platform lifts, hydraulic systems or comparable moving components.

Furthermore, wireless DMX transmission must not be used to trigger flame or pyrotechnic devices, explosion-driven effects, or to control gas or liquid effects. These include CO2 cannons, confetti shooters, water effects or similar.

W-DMX™ BlackBox G6 User Manual

Issue date: 2020-12

Edition: 1st Edition

Subject to modifications.

All trademarks referenced are trademarks or registered trademarks of their respective owners, whose protected rights are acknowledged.

Copyright © 2020, Wireless Solution Sweden AB

Wireless Solution Sweden AB

Majorebergsvägen 2

451 75 Uddevalla

Sweden

Tel.: +46 522 511 511

E-Mail: helpdesk@wirelessdmx.com

Web: www.wirelessdmx.com

TABLE OF CONTENTS

1. SAFETY INFORMATION	4
1.1. ENGLISH.....	4
1.2. DEUTSCH	5
2. YOUR WIRELESS DMX G6 SYSTEM	6
4. USER INTERFACE	8
4.1. F-1 AND R-512 MODELS	8
4.2. F-2 MODEL.....	9
5. HARDWARE	10
5.1. F-1 AND R-512 MODELS	10
5.1.2 CONTENTS INCLUDED	10
5.2. F-2 MODEL.....	11
5.2.2 CONTENTS INCLUDED	11
6. OPERATION	12
6.1. BASIC SETUP – LINKING DEVICES	12
6.2. UNLINKING DEVICES	12
6.3. LINKING MULTIPLE TRANSMITTERS WITH MULTIPLE RECEIVERS	13
6.4. SWITCHING FLEX MODE	13
6.5. CHANGING MODE	13
6.6. W-DMX™ CONFIGURATOR APP & BLUETOOTH	14
6.6.1. SETTING PIN CODE	14
6.6.2. RESET PIN CODE.....	14
6.6.3. TURNING BLUETOOTH ON/OFF	14
6.7. RDM	15
6.8. FREQUENCY USAGE	15
7. UPGRADES AND UPDATES	16
7.1. WiFi UPGRADE	16
7.2. CRMX™ UPGRADE.....	16
7.3. FIRMWARE UPDATE.....	16
8. TIPS & TRICKS	17
9. COMPLIANCE INFORMATION	18
9.1. FCC	18
9.2. INDUSTRY CANADA.....	18
9.3. CE	19
9.4. UKCA	19

1. Safety information

WARNING / WARNUNG / ATTENTION / ADVERTENCIA / VARNING / ADVARSEL / VAROITUS / ADVARSEL



This product must be earthed.



Das Gerät muss an eine geerdete Steckdose angeschlossen werden.



Cet appareil doit être branché à une prise de terre.



Este aparato se debe conectar a una toma de tierra.



Apparaten skall anslutas till jordat uttag.



Apparatet må tilkoples jordet stikkontakt.



Laite on liitettävä suojakoskettimilla varustettuun pistorasiaan.



Apparatets stikprop skal tilsluttes en stikkontakt med jord, som giver forbindelse til stikproppens jord.

1.1. English

1. Please read these instructions and safety instructions carefully before using this product.
2. Keep these instructions for future reference.
3. Never plug the product into the mains supply while it is still in its packaging. Never cover during use.
4. Only use indoors and in dry spaces, except where otherwise explicitly stated.
5. Verify that the product has not been damaged in transport before you make use of it.
6. Keep the product out of the reach of animals, children and persons who require supervision.
7. This product is intended for professional use only.
8. Always place the product on a stable, solid and flat base or safely secure it.
9. Do not use the product near hot surfaces or objects.
10. The mains cable must be regularly and carefully checked for damage to the cable, the plug and other parts. In the event of damage, the product must not be used until the mains cable has been replaced. If the product needs to be cleaned, the adapter or mains cable must be disconnected from the mains supply.
11. Repairs must only be carried out by a qualified person.
12. Note that the connected voltage and current corresponding to the sticker on the product.
13. Never submerge the product or the mains cable in water or any other liquid, in order to prevent electric shocks, fire, injury and other hazards.
14. Never carry the product by the cables and do not put the cord around sharp edges.

1.2. Deutsch

1. Bitte lesen Sie diese Hinweise und Sicherheitshinweise sorgfältig durch, bevor Sie dieses Produkt verwenden.
2. Bewahren Sie diese Anleitung zum späteren Nachschlagen auf.
3. Das Produkt nie anschließen, wenn es sich in der Verpackung befindet- Außerdem darf das Produkt beim betrieb nicht abgedeckt werden.
4. Nur in trockenen Innenräumen verwenden sofern nicht ausdrücklich anders angegeben!
5. Versichern Sie sich vor der Verwendung, das dieses Produkt beim Transport nicht beschädigt wurde.
6. Produkt außerhalb der Reichweite von Kindern, Tieren und zu beaufsichtigenden Personen aufbewahren.
7. Dieses Produkt ist nur für den professionellen Gebrauch bestimmt.
8. Stellen Sie das Produkt immer auf eine stabile, feste und flache Fläche auf.
9. Verwenden Sie das Produkt nicht in der Nähe von warmen Oberflächen oder Objekten.
10. Das Netzkabel muss regelmäßig und sorgfältig auf Schäden am Kabel, Stecker und anderen Teilen kontrolliert werden. Bei einem Schaden darf das Produkt erst wiederverwendet werden, wenn das Netzkabel repariert/ersetzt ist. Wenn das Produkt gereinigt werden soll, muss das Netzkabel vom Stromnetz getrennt werden.
11. Eventuell anfallende Reparaturen müssen von einer qualifizierten Person ausgeführt werden.
12. Beachten Sie, dass die angeschlossene Spannung und Strom dem entsprechen, was auf dem Typenschild angegeben ist.
13. Tauchen Sie das Produkt oder das Anschlusskabel niemals in Wasser oder in andere Flüssigkeiten ein, um einen Stromschlag, Brand, Verletzungen oder andere Gefahren zu vermeiden.
14. Das Produkt nicht am Netzkabel tragen und das Netzkabel nicht um scharfe Kanten legen.

2. Your Wireless DMX G6 System

Welcome to the Wireless DMX family! We hope you enjoy your brand-new devices – Wireless Solution is the industry’s leading system for transmitting and receiving DMX signals reliably, and we thrive on avid users like you who use our products. We appreciate all your constructive feedback!

Before you use, you must know: there are two main operating modes:

- **[TX]** Transmitter (to transmit DMX data as wireless signals)
- **[RX]** Receiver (to receive wireless signals and output as DMX)

Most our products are transceivers, meaning they can transmit or receive W-DMX™ signals, depending on how you set them up:

Product	TX	RX	RDM	WiFi
BlackBox G6 F-1 G5	✓	✓	✓	(✓ ¹)
BlackBox G6 F-2 G5	✓	✓	✓	(✓ ²)
BlackBox G6 R-512		✓	✓	

All G6 products are backward compatible to Generation 3. In order to operate in compatibility mode, please refer to 6.5 in this manual. By using the product in a compatibility mode, you will lose some of the features present in other modes. Please refer to our helpdesk service if you want to find more about which features you won’t be able to use in compatibility mode.

W-DMX™ G6 is compatible with CRMX™ protocol from LumenRadio AB. To use CRMX™ in your W-DMX™ G6 product you will need to install the appropriate license on your device. This can be done using the W-DMX™ Configurator App.

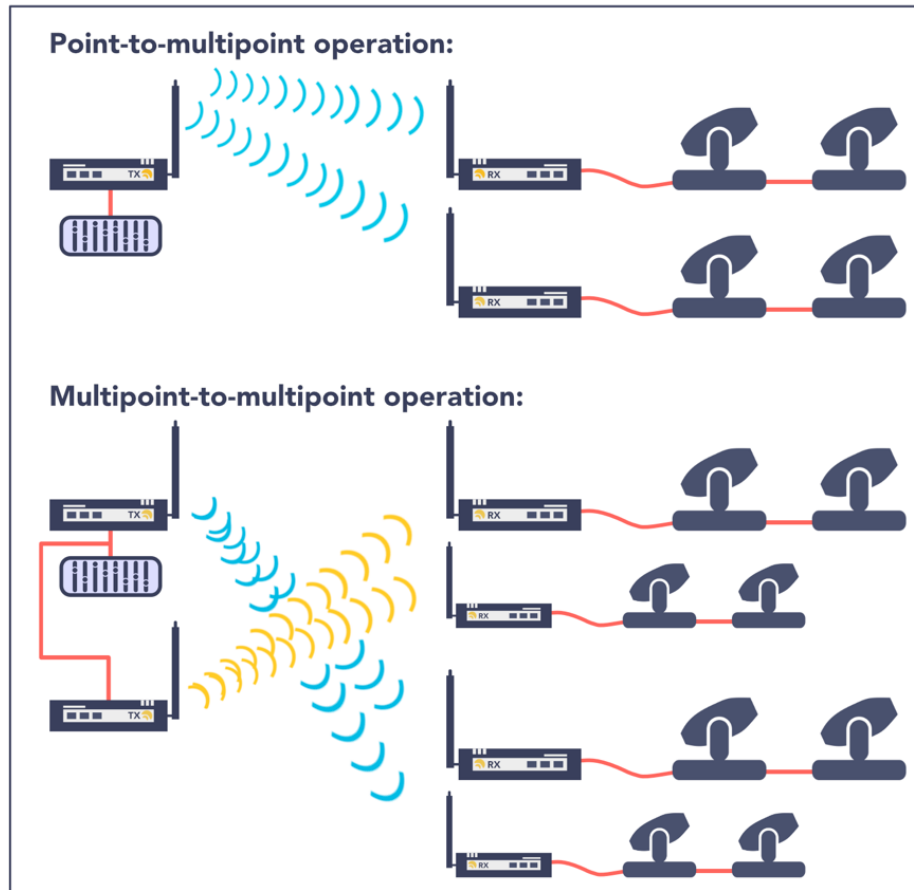
You may find W-DMX™ being used by several lighting manufacturers – this protocol, if specifically named “W-DMX™” will work in an identical way as a branded Wireless Solution product, and it is therefore compatible with our transmitters and receivers.

¹ Available as option, sold separately

² Available as option, sold separately

3. The W-DMX™ Technology

W-DMX™ is engineered by Wireless Solution Sweden to provide the same quality, reliability and performance as any wired DMX link. The technology allows you to establish point-to-point links, point-to-multipoint and multipoint-to-multipoint:



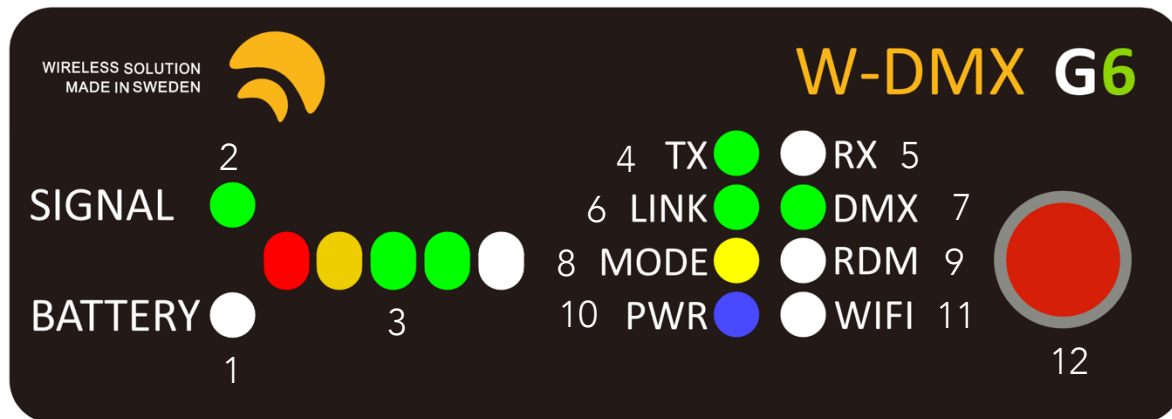
W-DMX™ is unique in its use of advanced radio technologies that are also used in mobile phones and military communication.

Rather than using fixed frequency channels, W-DMX™ uses Adaptive Frequency Hopping technology to continually check the radio channels for interferences and to rapidly move operation to clear radio channels. The checks are carried out in combination with another advanced technology: time division multiple access. This technology makes the most efficient use of every visited frequency channel.

4. User Interface

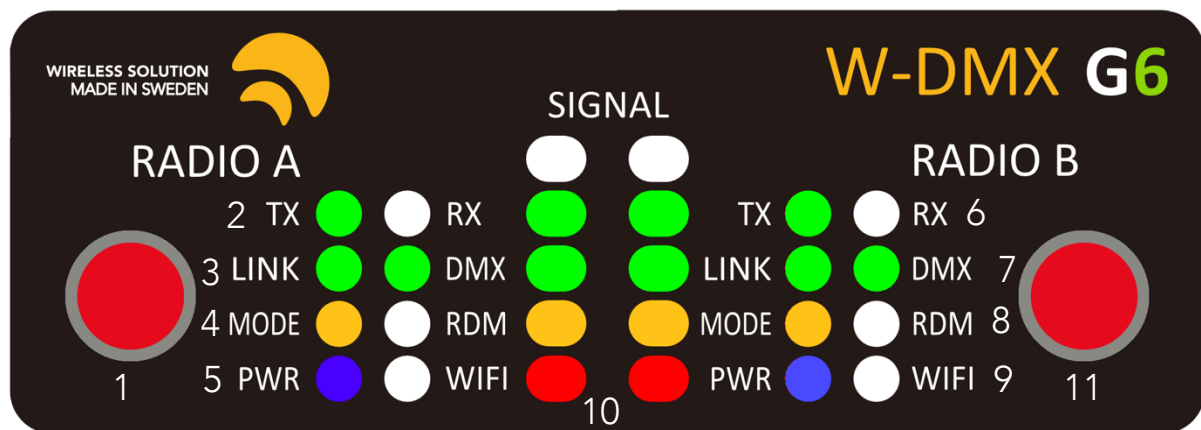
Though the interface display appears simple, there is a lot of information you can read back, which will help you properly set up your system and help you understand how your devices are operating.

4.1. F-1 and R-512 models



1. **BATTERY** Not used on the BlackBox series.
2. **SIGNAL** Indicates that the Signal status is showing signal strength.
3. **SIGNAL STATUS** On a receiver; indicates the received signal quality. On a transmitter; indicates the configured output power.
4. **TX** Device is operating as a transmitter.
5. **RX** Device is operating as a receiver.
6. **LINK** On a transmitter; states it's ready to establish a link.
On a receiver;
 - Off: not linked to any transmitter
 - On: active link from a transmitter
 - Blinking: Linked to a transmitter but link is lost [either the transmitter is out-of-range or turned off].
7. **DMX** Indicates whether DMX data is present.
8. **MODE** Indicates the radio mode [See chapter 3.4].
9. **RDM** Flashes when there is RDM traffic activity.
10. **PWR** States power condition of the device.
11. **WIFI** Indicate WiFi status;
 - Off: No WiFi installed, or WiFi is disabled
 - On: WiFi is enabled and a protocol configured.
 - Blinking slowly: WiFi is enabled, but no protocol is configured.
 - Blinking rapidly: WiFi is enabled and receiving ArtNet or Streaming ACN data.
12. **Red function button.**

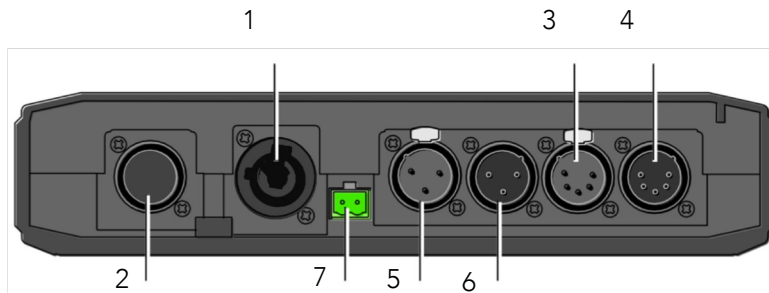
4.2. F-2 model



1. **Red function button** Radio A
2. **TX** Device is operating as a transmitter.
3. **LINK** On a transmitter; states it's ready to establish a link.
On a receiver;
 - Off: not linked to any transmitter
 - On: active link from a transmitter
 - Blinking: Linked to a transmitter but link is lost [either the transmitter is out-of-range or turned off].
4. **MODE** Indicates the radio mode [See chapter 3.4].
5. **PWR** States power condition of the device.
6. **RX** Device is operating as a receiver.
7. **DMX** Indicates whether DMX data is present.
8. **RDM** Flashes when there is RDM traffic activity.
9. **WIFI** Indicate WiFi status;
 - Off: No WiFi installed, or WiFi is disabled
 - On: WiFi is enabled and a protocol configured.
 - Blinking slowly: WiFi is enabled, but no protocol is configured.
 - Blinking rapidly: WiFi is enabled and receiving ArtNet or Streaming ACN data.
10. **SIGNAL STATUS** On a receiver; indicates the received signal quality. On a transmitter; indicates the configured output power.
11. **Red function button** Radio B

5. Hardware

5.1. F-1 and R-512 models



1. **AC Power Supply connector, powerCON® TRUE1®**
90-250V / 50-440 Hz (for other voltage and frequency options, contact manufacturer)
2. **WiFi antenna**
NOTE: Option to be purchased separately – contact manufacturer. Not available on R-512 model.
3. **XLR female 5 pin [DMX out]**
4. **F-1: XLR male 5 pin [DMX in]**
R-512: XLR female 5 pin [DMX out]
5. **XLR female 3 pin [DMX out]**
6. **F-1: XLR male 3 pin [DMX in]**
R-512: XLR female 3 pin [DMX out]
7. **DC Power Supply Connector, 5.08mm**
NOTE: 12V DC power supply [Polarity marked on the box] $\pm 20\%$, reverse polarity protected. Use a UL/ETL class 2 power supply.

5.1.2 Contents included

When you purchase a new BlackBox, the following items are included:

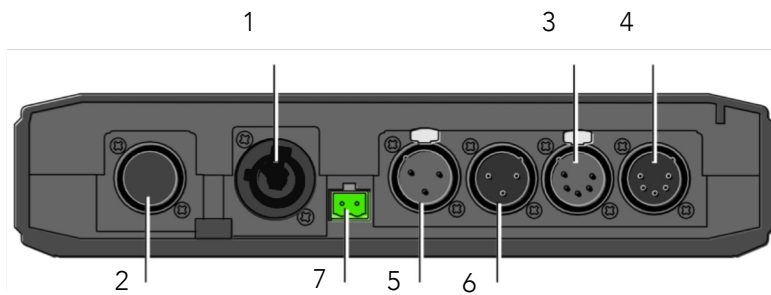
- BlackBox device [F-1 or R-512]
- User Manual
- Antenna adapter [90 Deg]
- 3dBi antenna
- Mounting brackets
- Phoenix DC connector

Working Temperature: -10° to 45° Celsius, storage temperature -20° to 50° Celsius. Max. humidity 90% (non-condensing). For working conditions outside this limit, contact manufacturer.

Dimensions: W x D x H: 260 x 210 x 70 mm [10.2" x 8.3" x 2.8"] | Net: 1 Kg [2.2 lb.]

NOTE: Power cable is not included.

5.2. F-2 model



1. **AC Power Supply connector, powerCON® TRUE1®**
90-250V / 50-440 Hz (for other voltage and frequency options, contact manufacturer)
2. **WiFi antenna**
NOTE: Option to be purchased separately – contact manufacturer. Not available on R-512 model.
3. **XLR female 5 pin [DMX out Radio A]**
4. **XLR male 5 pin [DMX in Radio A]**
5. **XLR female 5 pin [DMX out Radio B]**
6. **XLR male 5 pin [DMX in Radio B]**
7. **DC Power Supply Connector, 5.08mm**
NOTE: 12V DC power supply [Polarity marked on the box] $\pm 20\%$, reverse polarity protected. Use a UL/ETL class 2 power supply.

5.2.2 Contents included

When you purchase a new BlackBox, the following items are included:

- BlackBox F-2 device
- User Manual
- 2pcs. antenna adapter [90 Deg]
- 2pcs. 3dBi antenna
- Mounting brackets
- Phoenix DC connector

Working Temperature: -10° to 45° Celsius, storage temperature -20° to 50° Celsius. Max. humidity 90% (non-condensing). For working conditions outside this limit, contact manufacturer.

Dimensions: W x D x H: 260 x 210 x 70 mm [10.2" x 8.3" x 2.8"] | Net: 1 Kg [2.2 lb.]

NOTE: Power cable is not included.

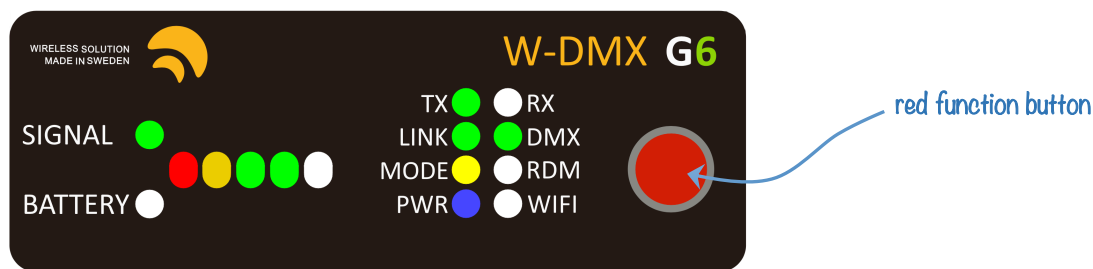
6. Operation

All W-DMX™ G6 devices uses similar user interfaces, however some model-specific differences may apply.

6.1. Basic setup – Linking devices

A basic setup is defined by the link between two devices. This means that, in order to send data from a transmitter to a receiver, it's necessary to link the devices:

Press the red function button, on the transmitter *momentarily* and the *LINK* LED starts flashing.



NOTE: All available (currently unlinked) receivers, as long as they are turned on and compatible with the transmitter's radio mode, will pair with this transmitter. The *LINK* LED of each receiver will flash for 5 seconds, and then stay static once linked up.

There is no limit of the number of receivers that can link up with a transmitter – there can be an infinite number of receivers all paired with a single transmitter.

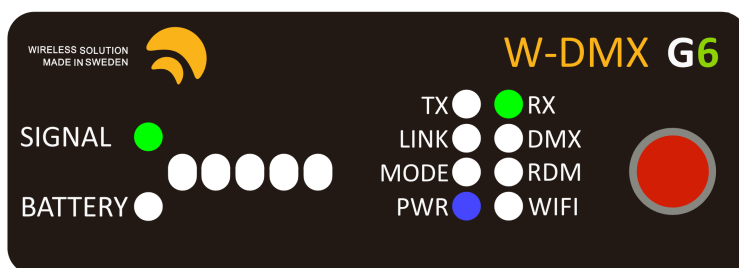
NOTE: An F-2 in RX mode will not link RADIO B unless RADIO A is already linked. This is to allow easy linking to different transmitters.

6.2. Unlinking devices

There are two ways to unlink devices – individual unlink, or group unlink:

Individual unlink:

Press and hold the red function button, on each receiver that you wish to unlink, *for at least 3 seconds*. The *LINK* LED will turn off.



Group unlink:

Press and hold the red function button on the transmitter *for at least 3 seconds*. This will unlink all currently powered receivers that are linked to this transmitter.

6.3. Linking multiple transmitters with multiple receivers

When multiple receivers need to be linked up with different transmitters, repeat the process in 6.1., but turn off all receivers you do not wish to pair up. For example:

- If you have 2 transmitters and 10 receivers, pair the first transmitter to 5 receivers, while the last five are turned off.
- After that, turn the last five receivers, and pair them to the second transmitter.

NOTE: This will not affect any receiver that has already been paired up.

6.4. Switching FLEX mode

All units identified as a transceiver can be changed between transmitter or receiver – the units capable to operate in both modes are listed in chapter 2.

FLEX mode determines if the unit is used in transmit mode (TX) or receive mode (RX):

1. Press the red function button rapidly 5 times.
2. Press and hold the red function button for at least 3 seconds.
3. The *LINK* and *DATA* LEDs will flash alternating.
4. Each time you press the red function button you will step through the available modes, this will be indicated by a flashing *RX* or *TX* LED.
5. Press and hold the red function button

Changing FLEX mode of an F-2 unit:

In an F-2 unit the FLEX mode works the same as above, however both universes are controlled using the RADIO A red function button.

TX – TX: Both universes operate as transmitters

RX – RX: Both universes operate as receivers

6.5. Changing MODE

There are a few operating modes within all W-DMX™ products using different generations of the communication protocol. The W-DMX™ G6 supports several modes to maximize compatibility with different generations of equipment. When operating as an RX the device will automatically switch to the correct mode depending on the mode of the transmitter that is linking to it. The following modes are supported when operating as an RX:

	MODE LED
G3	Green
G4	Red
G4S	Violet
G5	Amber
CRMX ³	White

³ CRMX mode requires the CRMX option to be installed.

While operating as a TX you can change between modes at any given moment:

1. Press the red function button rapidly 3 times.
2. Press and hold the red function button for at least 3 seconds.
3. Each time you press the red function button you will step through the available modes; this will be indicated by the *MODE* LED.
4. Press and hold the red function button to save and exit.

NOTE: When operating as TX, some modes are not supported.

NOTE: All changes shall be made to the transmitter. It's necessary to re-link all receivers after changing control modes.

6.6. W-DMX™ Configurator app & Bluetooth

All configuration and operation can be performed from the W-DMX™ Configurator app that is available from App Store on iOS and Google Play on Android.



W-DMX™ Configurator app, search for "W-DMX Configurator" on App Store or Google Play.

6.6.1. Setting PIN code

To avoid unauthorized access to W-DMX™ G6 devices, it is recommended to set a PIN code for your device. This is done from the W-DMX™ Configurator app.

6.6.2. Reset PIN code

If you have forgotten your PIN code, you can reset it by following the following procedure:

1. Press the red function button rapidly 7 times.
2. Press and hold the red function button for at least 3 seconds.
3. The device will now reboot with the PIN code disabled.

6.6.3. Turning Bluetooth on/off

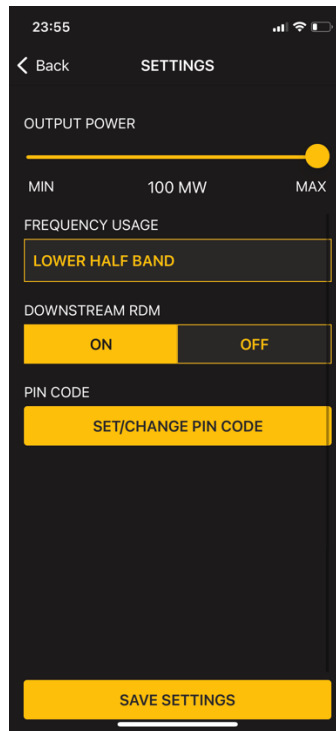
The *MODE* LED will flash with a blue light every two seconds when Bluetooth is enabled. When Bluetooth is disabled, no blue flashes will appear on the *MODE* LED.

Bluetooth can be switched on or off at any time:

1. Press the red function button rapidly 2 times.
2. Press and hold the red function button for at least 3 seconds.
3. The device will now reboot with the Bluetooth mode toggled.

6.7. RDM

As default, all products come with RDM disabled. To use RDM, this must be enabled from within the W-DMX™ Configurator app.



The changes must be done on the transmitter and on each receiver that needs to do downstream RDM.

6.8. Frequency usage

Sometimes there are cases that require some extra frequency planning. To make this easier for you, the W-DMX™ Configurator app provides a number of pre-set options for frequency usage;

- Full band
- Lower or upper half
- Lower, mid or upper third

Selecting any of these settings, except for *Full band*, limits the device's frequency hopping so that it leaves the other parts of the bands untouched.

7. Upgrades and Updates

Before starting to install any upgrade options, make sure you have updated to the latest firmware version.

7.1. WiFi upgrade

The WiFi upgrade pack comes with detailed instructions on how to install the WiFi module and how to configure it.

The WiFi module supports ArtNet I/II/III with RDM and Streaming ACN.

7.2. CRMX™ upgrade

CRMX™ – the radio protocol of LumenRadio’s wireless DMX and RDM systems – can be used by your BlackBox G6 units. It requires a software option that can be purchased separately.

Install the option using the W-DMX™ Configurator app.

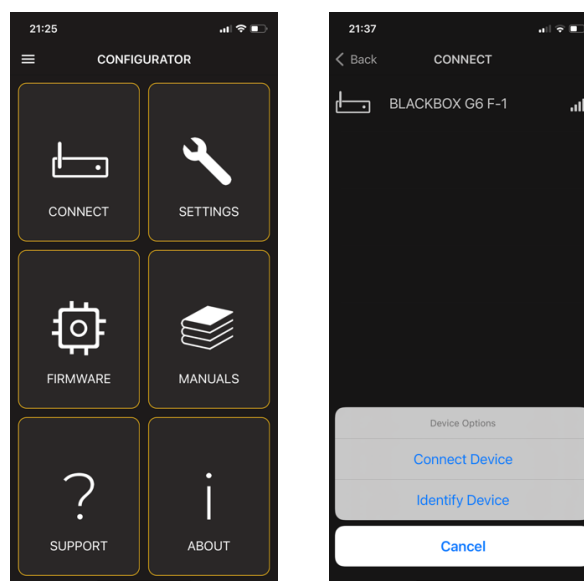
7.3. Firmware Update

Wireless Solution is committed to developing and improving its wireless technology – this means that we every now and then releases new firmware versions. Sometimes it might be added functionality, but since even the best makes mistakes sometimes – we might release bug fixes also. All G6 products is updateable, either via the W-DMX™ G6 update cable or – more conveniently – via our W-DMX™ Configurator App for iOS and Android.

New firmware versions can be found on Wireless Solution’s portal at <https://my.wirelessdmx.com> or will be downloaded automatically in the W-DMX™ Configurator app.

Instructions for installing firmware updates from the app:

1. Start the W-DMX Configurator app on your iOS or Android device.
2. Click “Connect” and you will be presented with a list of nearby devices. The list is sorted by an approximated distance.
3. Click a device in the list and choose “Identify Device” if you are unsure which unit to connect to.
4. Click “Connect Device” to connect to the desired device.
5. In the main screen of the app, click “Firmware” to automatically update to the latest firmware for your device.

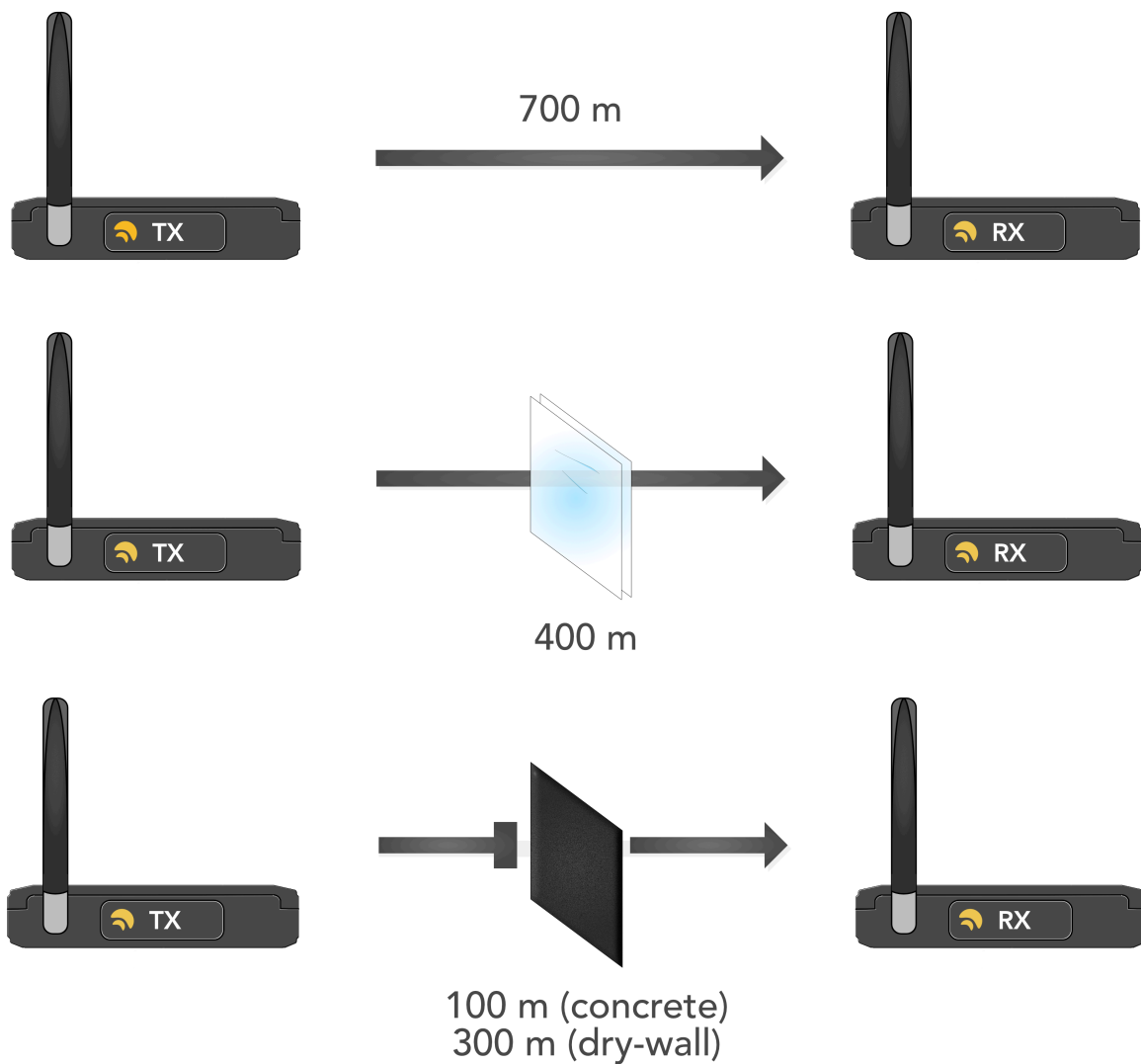


8. Tips & tricks

There are several tips and tricks that could make your wireless transmission work better. Here's a few that should be followed:



It's important that all antennas point to the same axis – wireless waves have a radial pattern that should be valued. There are a number of accessories that can help maintaining directionality.



There are limitations to how wireless waves propagate through air. Physical barriers like glass, concrete and walls will limit the transmission range. Always try to have clear line-of-sight between transmitters and receivers.

9. Compliance Information

9.1. FCC

FCC IDENTIFIER: XRSTIMOMWAN201

FCC Information to User

This product does not contain any user serviceable components and is to be used with approved antennas only. Any product changes or modifications will invalidate all applicable regulatory certifications and approvals

FCC Guidelines for Human Exposure

This equipment complies with FCC radiation exposure limits set forth for an uncontrolled environment. This equipment should be installed and operated with minimum distance of 20 cm between the radiator and your body. This transmitter must not be co-located or operating in conjunction with any other antenna or transmitter.

FCC Declaration of Conformity

We Wireless Solution Sweden AB, Majorebergsgatan 2, 451 75 Uddevalla, Sweden, declare under our sole responsibility that this product complies with Part 15 of FCC Rules. Operation is subject to the following two conditions:

- This device may not cause harmful interference, and
- This device must accept any interference received, including interference that may cause undesired operation.

FCC Radio Frequency Interference Warnings & Instructions

This equipment has been tested and found to comply with the limits for a Class B digital device, pursuant to Part 15 of the FCC Rules. These limits are designed to provide reasonable protection against harmful interference in a residential installation. This equipment uses and can radiate radio frequency energy and, if not installed and used in accordance with the instructions, may cause harmful interference to radio communications. However, there is no guarantee that interference will not occur in a particular installation. If this equipment does cause harmful interference to radio or television reception, which can be determined by turning the equipment off and on, the user is encouraged to try to correct the interference by one or more of the following methods:

- Reorient or relocate the receiving antenna
- Increase the separation between the equipment and the receiver
- Connect the equipment into an electrical outlet on a circuit different from that which the radio receiver is connected
- Consult the dealer or an experienced radio/TV technician for help.

Modifications made to the product, unless expressly approved by Wireless Solution Sweden AB, could void the user's right to operate the equipment.

9.2. Industry Canada

This digital apparatus does not exceed the Class B limits for radio noise emissions from digital apparatus set out in the Radio Interference Regulations of the Canadian Department of Communications.

Le présent appareil numérique n'émet pas de bruits radioélectriques dépassant les limites applicables aux appareils numériques de la classe B prescrites dans le Règlement sur le brouillage radioélectrique édicté par le ministère des Communications du Canada.

9.3. CE

This product complies with the Essential Requirements of RED (Radio Equipment Directive) of the European Union (2014/53/EU). This product meets the requirements of relevant conformance standards. A detailed Declaration of Conformity is available upon request from the manufacturer.

9.4. UKCA

This product complies with the relevant statutory requirements in the United Kingdom. This product meets the requirements of relevant conformance standards. A detailed Declaration of Conformity is available for market surveillance upon request from the manufacturer.

10. Warranty

Wireless Solution Sweden AB warrants this W-DMX™ branded hardware product against defects in materials and workmanship under normal use for a period of ONE (1) YEAR from the date of purchase by the original end-user purchaser ("Warranty Period").

Products to be returned under warranty must be accompanied by an RMA Authorization Number.

Wireless Solution AB does not warrant that the operation of the product will be uninterrupted or error-free. The manufacturer is not responsible for damage arising from failure to follow instructions relating to the product's use.

CARE, MAINTENANCE AND REPAIR

In order to ensure the faultless functioning of the device in the long term, it must be maintained and serviced regularly, at least every 3,000 operating hours or at the latest after one year.

CARE (CAN BE CARRIED OUT BY THE USER)



WARNING! Before carrying out any maintenance work, the power supply and, if possible, all device connections must be unplugged.



PLEASE NOTE! Improper care can lead to impairment of the device or even destruction.

1. Housing surfaces must be cleaned with a clean, damp cloth. In doing so, ensure that no moisture can penetrate into the device.
2. Air inlets and outlets must be regularly cleaned to remove dust and soiling. If compressed air is used, care must be taken to ensure that damage to the device is prevented (e.g. fans must be blocked in this case, as they could otherwise over-rev).
3. Lines and plug contacts must be cleaned regularly to remove dust and soiling.
4. In general, no cleaning agents or abrasive agents may be used for maintenance, otherwise the surface finish may be impaired.
5. Devices must generally be stored in a dry place and protected from dust and dirt.
6. To ensure correct and safe operation, all accessible or removable lenses and light-emitting apertures must be cleaned regularly.

MAINTENANCE AND REPAIR (by qualified personnel only)



HAZARD! There are live components in the device. Even after disconnecting the mains connection, there may still be residual voltage in the device, e.g. due to charged capacitors.



PLEASE NOTE! There are no user-serviceable components in the device.



PLEASE NOTE! Maintenance and repair work may only be carried out by sufficiently qualified specialist personnel. If in doubt, consult a specialist workshop.



PLEASE NOTE! Improperly performed maintenance work may affect warranty claims.



PLEASE NOTE! For conversion or retrofit sets provided by the manufacturer, it is essential to observe the installation instructions included.

DISPOSAL



PACKAGING:

1. Packaging can be fed into the reusable material cycle using the usual disposal methods.
2. Please separate the packaging in accordance with the disposal laws and recycling regulations in your country.



DEVICE:

1. This device is subject to the European Directive on Waste Electrical and Electronic Equipment, as amended. WEEE Directive Waste Electrical and Electronic Equipment. Old appliances do not belong in household waste. The old device must be disposed of via an approved disposal company or a municipal disposal facility. Please observe the applicable regulations in your country!
2. Observe all disposal laws applicable in your country.
3. As a private customer, you can obtain information on environmentally-friendly disposal options from the seller of the product or the appropriate regional authorities.

ENGLISH

MANUFACTURER'S DECLARATIONS

MANUFACTURER'S WARRANTY & LIMITATION OF LIABILITY

Adam Hall GmbH, Adam-Hall-Str. 1, D-61267 Neu Anspach / E-mail Info@adamhall.com / +49 (0)6081 / 9419-0.

Our current warranty conditions and limitation of liability can be found at:

https://cdn-shop.adamhall.com/media/pdf/Manufacturers-Declarations-CAMEO_DE_EN_ES_FR.pdf.

Contact your sales partner for service.

CE CONFORMITY

Adam Hall GmbH hereby confirm that this product meets the following guidelines (where applicable)

:

Low-Voltage Directive (2014/35/EU)

EMC Directive (2014/30/EU)

RoHS (2011/65/EU)

RED (2014/53/EU)

EC DECLARATION OF CONFORMITY

Declarations of conformity for products subject to the LVD, EMC, RoHS Directive can be requested from info@adamhall.com.

Declarations of conformity for products subject to RED can be downloaded from www.adamhall.com/compliance/.

